



Wickets and gates – SOLID®

- surface finish: galvanized + PVC (RAL 6005 - green)
- frame made of round sections (closed)
- welded mesh paneling
- mesh size 50 × 100 mm
- wire diameter 3,50 mm
- wicket consists of 2 posts, including adjustable hinges
- latch lock, plastic handle and metal end stop of the wicket are part of the delivery

SINGLE-WING WICKET		
wicket width* × height (mm)	height of posts / diameter (mm)	galvanized + PVC
1073 × 950	1500 / 48	✓
1073 × 1200	1750 / 48	✓
1073 × 1450	2000 / 48	✓
1085 × 1750	2300 / 60	✓
1085 × 1950	2500 / 60	✓

* width at post middle

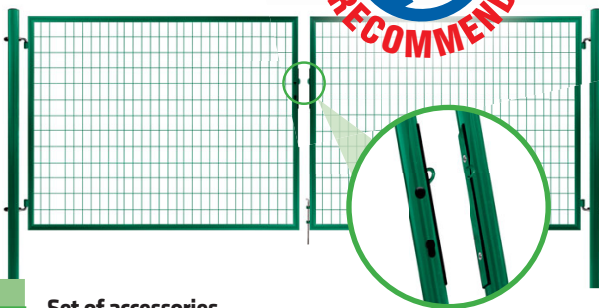


Double-wing gate – SOLID® with steel lugs for padlock

- surface finish: galvanized + PVC (RAL 6005 - green)
- frame made of round sections (closed)
- welded mesh paneling
- mesh size 50 × 100 mm
- wire diameter 3,50 mm
- wicket consists of 2 posts, including adjustable hinges
- gate locking with padlock (**not part of delivery**) in metal lugs

DOUBLE-WING GATE		
gate width* × height (mm)	height of posts / diameter (mm)	galvanized + PVC
3526 × 950	1600 / 60	✓
3526 × 1200	1850 / 60	✓
3542 × 1450	2100 / 76	✓
3542 × 1750	2400 / 76	✓
3542 × 1950	2600 / 76	✓

* width at post middle



Set of accessories for double swing gate IDEAL® – UNIVERSAL



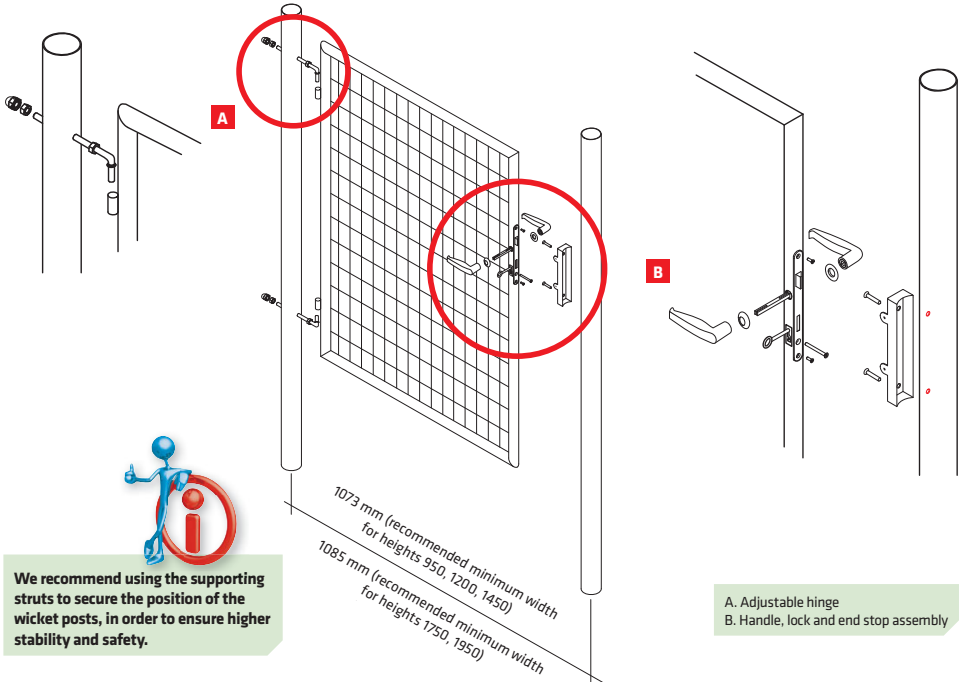
package contents

- wicket lock with stainless steel part
- insert 47 - IDEAL, PILGATE (23.5/23.5)
- plastic cover for insert, black for round profile
- aluminium handle for round profile, black
- gate stop IDEAL®



DOUBLE SWING GATE IS MADE FOR UNIVERSAL USE. Locking the double swing gate through eyelets can be changed for full-featured locking system IDEAL® – UNIVERSAL (wicket lock with stainless steel part, insert 47 (23.5/23.5), plastic cover for insert, aluminium handle for round profile, gate stop IDEAL®). Set is sold separately and it is not part of the double swing gate package.

Single-wing wicket – SOLID®



We recommend using the supporting struts to secure the position of the wicket posts, in order to ensure higher stability and safety.

Double-wing gate – SOLID®

